

CUBISCAN MDT SETUP GUIDE

This chapter provides instructions for assembling and setting up the Master Data Table. Perform the steps to set up the Master Data Table in the following order:

- Placement (page 9)
- Assembling Master Data Table (page 10)
 - Setting up the table legs (page 10)
 - Height adjustment and leveling (page 12)
 - Installing back and side panels (page 14)
- Connecting power (page 16)
- Turning the Master Data Table on (page 16)

Placement



The Master Data Table is designed to be operated in a warehouse environment; however, for proper operation the following conditions should be met if possible.

- Do not subject the Master Data Table to extremes in temperature or humidity. Locate the Master Data Table as far from open freight doors as possible. Heaters or air conditioners should not blow directly on the Master Data Table.
- Avoid placing the Master Data Table in direct sunlight, as it may affect measurement readings.
- Protect the Master Data Table from static electricity, especially the touchscreen.
- Place the Master Data Table on a flat, sturdy surface as free from vibration as possible.
- Maintain a minimum of one-inch clearance at the back and sides of the Master Data Table. Do not rest objects against or set objects on the Master Data Table when not in use.

- If a computer is used, place it as close to the Master Data Table as possible. The operator needs to use the keyboard or mouse on the computer while cubing objects using the Master Data Table.
- Orient the Master Data Table so the track sensors can be accessed easily.

Assembling the Master Data Table



Setting up the table legs

1. Remove packing materials and position the table in desired location.



Figure 2
Table base

2. Begin by folding down one set of legs. Thread the 3/8" (16) bolts with washers through the two pre-tapped holes on the upper side of the legs. The top bolt will require a spacer.

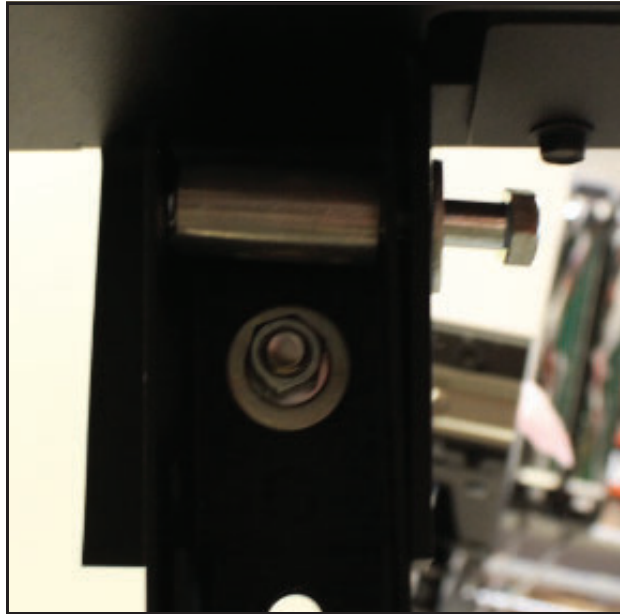


Figure 3
Legs - bolt and spacer

3. Secure the bolts on the other side with the flange nuts using a 9/16" socket.

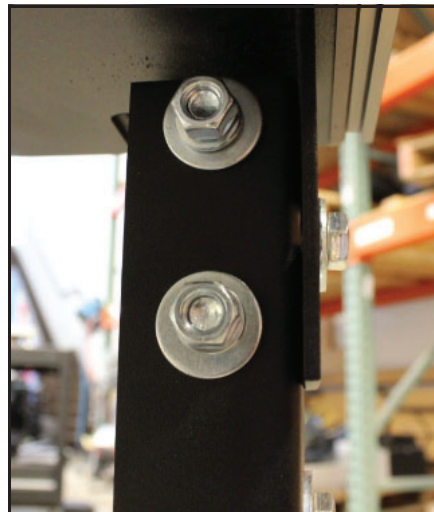


Figure 4
Legs - flange nuts and washers

4. Once the legs are secure, fold down the other side and secure the legs with the bolts and flange nuts the same as the first.

5. Attach the lower railings to the legs using the 1/4" (20) bolts. Secure in the back with the flange nuts, using a 3/8" socket.

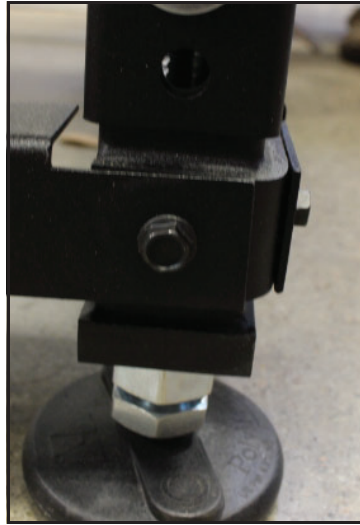


Figure 5
Leg rails

Height adjustment and leveling

1. Adjust the height of the legs, by removing the two adjuster bolts at the side of the legs.



Figure 6
Adjusting table height

2. Extend the legs to the desired height and secure it with the adjuster bolts. Ensure all legs are adjusted to the same height.
3. If the table requires further leveling, the platforms at the bottom of each leg may be adjusted to level out the table. Use a wrench to turn the nut on the table leg to adjust the height in small increments.

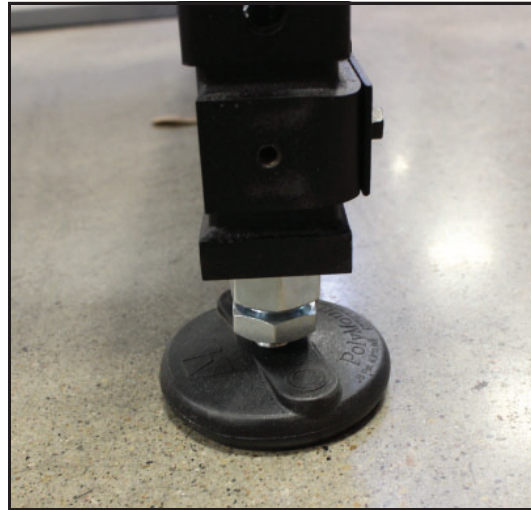


Figure 7
Leveling feet

NOTE >

The Master Data Table does not need precise leveling for proper function. As long as the floor is relatively level, there should be no need to adjust the leveling.

Back and side panels

1. Loosen the bolts for the side panel. Position the side panel over the bolts aligning with the pre-tapped, slotted holes. Hand tighten bolts.

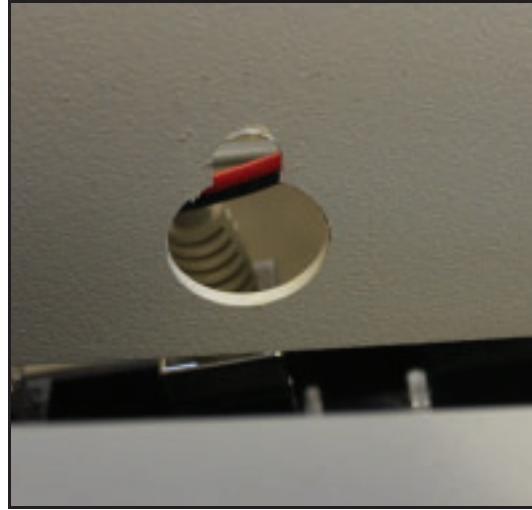


Figure 8
Slotted hole

2. Screw in additional bolts and tighten with 3/8" socket.



Figure 9
Side panel bolts

3. Connect cable from table into side panel input.

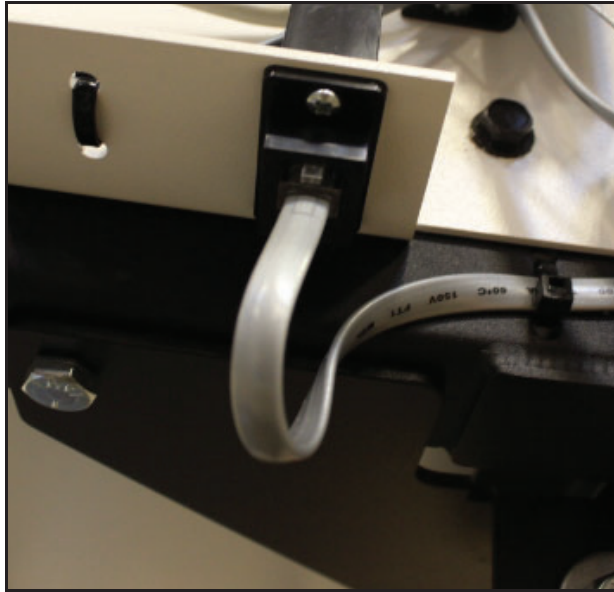


Figure 10
Table connector

4. Loosen back panel bolts. Position the back panel over the bolts aligning with the pre-tapped, slotted holes. Hand tighten bolts.
5. Screw in additional bolts and tighten with 3/8" socket.
6. Connect side panel with back panel with 1/4" (20) screws.



Figure 11
Connecting panels

7. Ensure all bolts and screws are sufficiently tight. Do not over tighten as this may strip the threading.

Connecting power

1. Connect the power at the bottom of the side panel along with any network cables.



Figure 12
Connecting power

2. Plug the power cord into an electric outlet. Ensure the cord is in a safe location where it will not be a tripping hazard.

NOTE >

The Master Data Table should be powered on before running the Qbit program to cube and weigh packages.

Turning on the Master Data Table

Specific procedures must be followed each time you turn on the Master Data Table, as follows:

1. Make sure there are no packages or other objects on the Master Data Table platform.
2. Make sure the sensors are in the home positions.
 - **panel sensor (side)** - home position is at the bottom of the side panel.

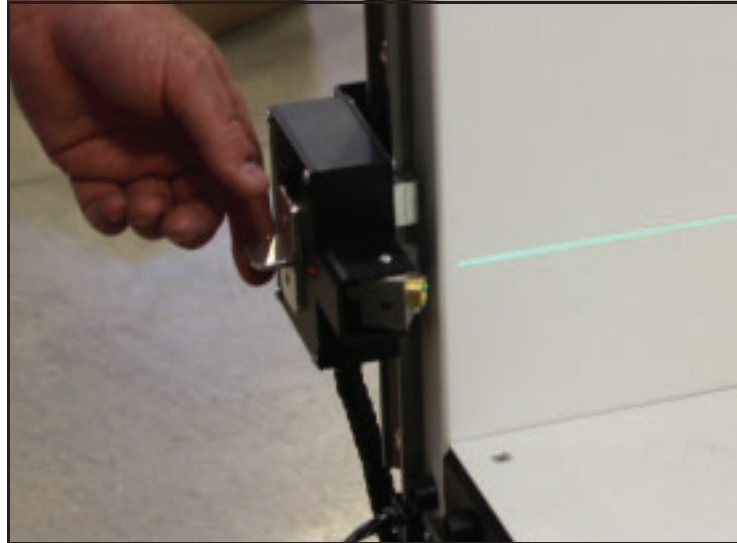


Figure 13
Panel sensor (side)

- **panel sensor (top)** - home position is on the far side nearest the back panel.

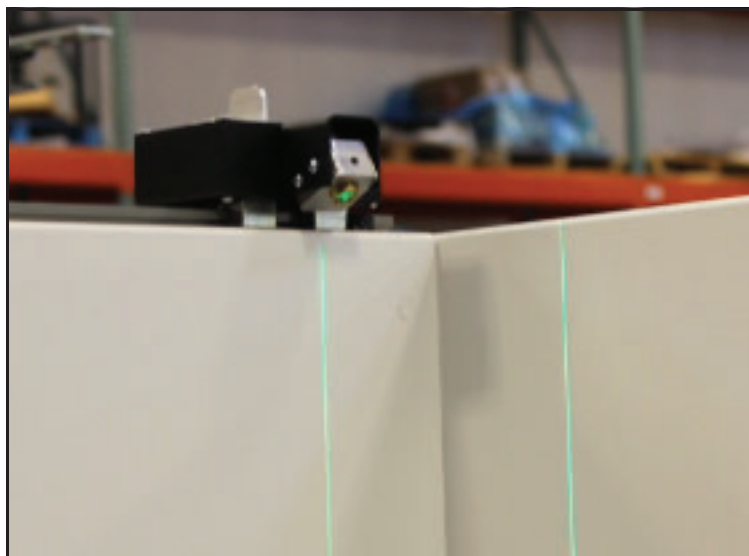


Figure 14
Panel sensor (top)

- **table sensor** - home position is on the side nearest the side panel.

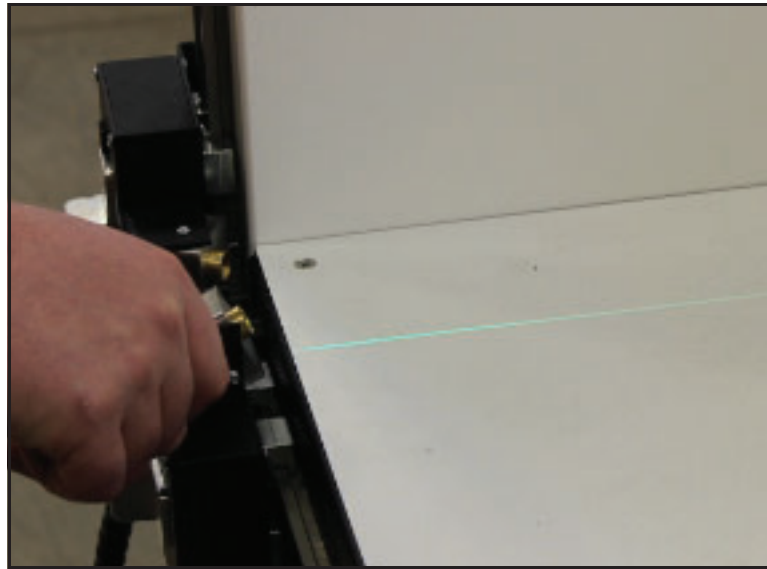


Figure 15
Table sensor

3. The table is ready for operation.

Setup checklist



Before using the Master Data Table for the first time, verify the following:

1. Have the Master Data Table been placed in the proper operating environment?
2. Has the Master Data Table been fully assembled?
3. Has all shipping material been removed?
4. The Master Data Table should not be pushed up against a wall and no object, cable, etc., should be resting on it or against it.
5. Has the AC power cord been connected correctly?
6. Does the Master Data Table require recalibration? The Master Data Table *may* require recalibration due to handling during

shipping. Refer to page 36 for information on calibrating the Master Data Table.